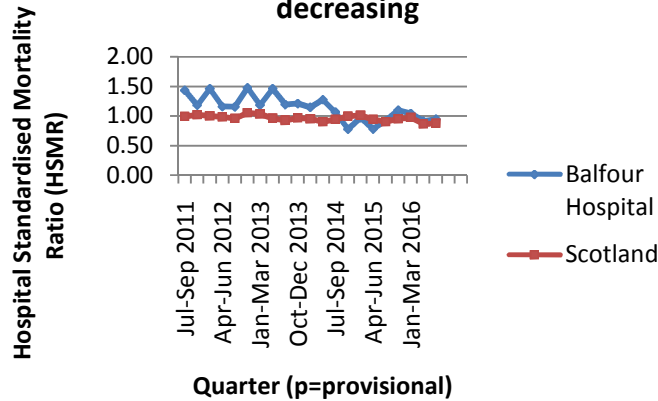


The Hospital Standard Mortality Ratio is decreasing



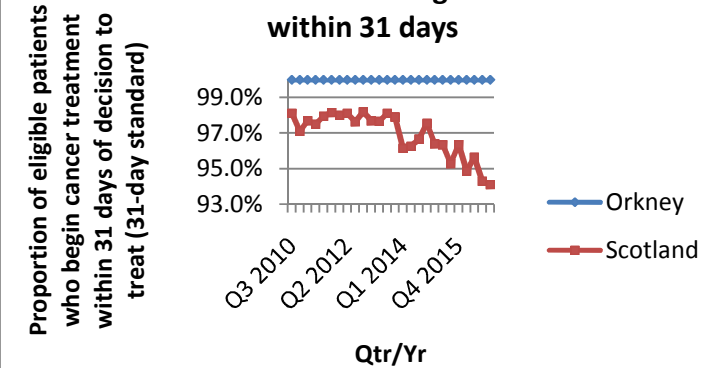
NHS ORKNEY – ANNUAL REVIEW 2017

AT A GLANCE OUTCOMES 2016-2017

Compared to the Scottish average, more time is spent at home in the last six months of life in Orkney

In 2014/15, 89.4% of time was spent at home or in a community setting in the last 6 months of life. Scottish average: 86.3%.

100% of Cancer waits begin treatment within 31 days



89.6% of babies have a healthy birth weight

89.6% of Orkney babies born in the year ending 31st March 2016 had healthy birth weights (appropriate weight for gestational age).

93.8% of patients are treated within 18 weeks

At December 2016, 93.8% of patients were treated within 18 weeks of onward referral to other services; therefore, meeting the national target of 90%.

Patient satisfaction levels are high within local healthcare services

93% of members of the public surveyed in 2015 said they were very satisfied, fairly satisfied or neither satisfied or dissatisfied with Orkney's health services.

Healthy Life Expectancy is above the Scottish average

Healthy Life Expectancy	Male	Female
	2009-13	2009-13
Orkney	68.3	70.9
Scotland	63.1	65.3
Difference	5.2	5.6

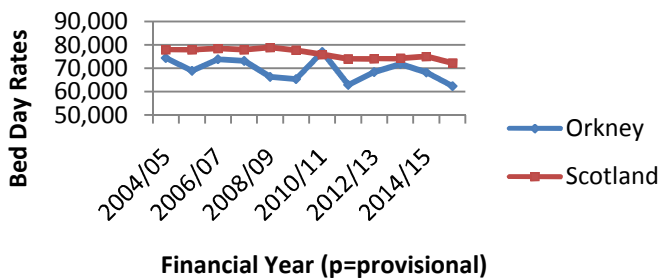
People are living longer

Life Expectancy	Male	Female
	2013-15	2013-15
Orkney	78.8	82.8
Scotland	77.1	81.1
Change	1.7	1.7

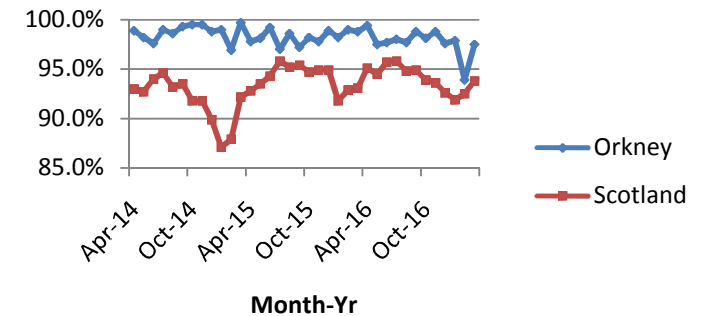
Staff Attendance Rate is higher than Scottish average

Staff Absence Rate	2015/16
Orkney	5.10
Scotland	5.16
Difference	0.6

Emergency Admission Rates are decreasing



Waiting times in A+E are shorter than the Scottish average



AT A GLANCE TARGET PERFORMANCE IN 2016/2017

- At March 2017, 97.5% of patients in **A+E** waited for **less than 4 hours**.
- Patient journeys from **referral to treatment** were **within 18 weeks** for 94.2% of all cases in the period April 2015 to December 2016.
- **100%** of **patients** urgently referred for **cancer treatment** began treatment **within 31 days** of the decision to treat in the period from July 2010 to December 2016.
- In the year up until December 2016, the quarterly incidence rates **of identifications of C diff associated disease cases** per 100,000 occupied bed days among people aged 65 and over **ranged between 34.4 and 45.6** whereas in Scotland, **it ranged between 24.3 and 29.8**.
- In the year up until December 2016, the quarterly incidence rates **of identifications of MRSA infections** per 100,000 acute occupied bed days **ranged between 26.3 and 130.2** whereas in Scotland, it **ranged between 31.1 and 33.2**.
- In 2015/16, there were **688 alcohol-related hospital discharges per 100,000 people** in Orkney compared to Scotland's overall rate of **665**.
- In 2015/16, Orkney's **emergency admission bed day rate for patients of all ages** was **62,330 per 100,000 people in the population**, compared to Scotland's rate of **72,169**.

***Please note that where values appear to be very high or low, this could be due to the relatively small population of Orkney compared to the larger population of Scotland.**